



CANADIAN VETERINARY
MEDICAL ASSOCIATION
L'ASSOCIATION CANADIENNE
DES MÉDECINS VÉTÉRINAIRES

LOSS PREVENTION

Burglary Prevention

Burglary is a property crime that occurs when the business is closed. The burglar may enter through any opening (door, window, air conditioning duct, skylight); or even create one through an interior shared wall or an outside wall. Reduce your risk as much as possible - burglary is a crime of opportunity that can be prevented.

Surveillance and Security are Critical

Lighting

Install bright interior and exterior lighting to make all openings visible from both the outside and the inside of the business.

Locks and Safes

Purchase high quality door locks and use them. Grilles and grates delay entry. Use a money safe bolted to the floor and visible from the street.

Entry Control

Know who has a key and restrict access to the front door. Re-key the lock if a once trusted employee is discharged for cause. Re-key locks annually if you have high turnover of employees. Consider an access control system rather than keys.

Intrusion Alert

Install a good quality alarm system to detect unauthorized entry. Check with your Better Business Bureau, Chamber of Commerce, law enforcement, and other businesses before you make this investment.

Windows

Consider burglary resistant glass in accessible areas or use unbreakable polycarbonate, particularly if you have high value items in window displays.

Environment

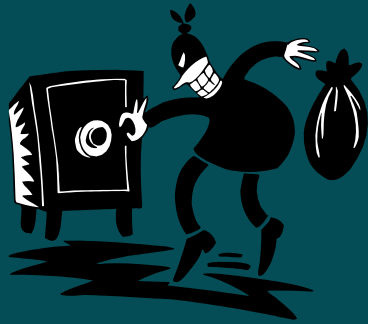
Keep areas around the business clean to aid visibility. Display your most valuable articles near the center of the room to force a burglar to take the longest possible escape route. Keep merchandise displays organized to allow maximum visibility throughout the business. Check closets and restrooms before you lock up. You don't need an unwanted visitor staying inside your business after closing hours.

Take Action – Get Involved With Your Community

Learn about crime in your neighborhood and what is being done about it. Offer to help. You can provide expert advice, funding, publicity and meeting places for citizen efforts.

- Hire employees from the neighborhood and make a special effort to give teens an opportunity to work.
- Include crime prevention information in your staff memos, customer statements and notices.
- Role-play a robbery situation with your employees.
- If you use vehicles, teach your drivers to spot suspicious behavior and how to notify the police.

If you're radio dispatched, train your dispatcher to report information effectively.



Plan Administrator

Western Financial
Group Insurance Solutions

777 Portage Avenue
Winnipeg, Manitoba R3G 0N3
Telephone: (204) 943-0331
1-800-665-8990
Fax: (204) 943-5531

Website

www.canadianveterinarians.net



Group Insurance Solutions